

Fig. 1

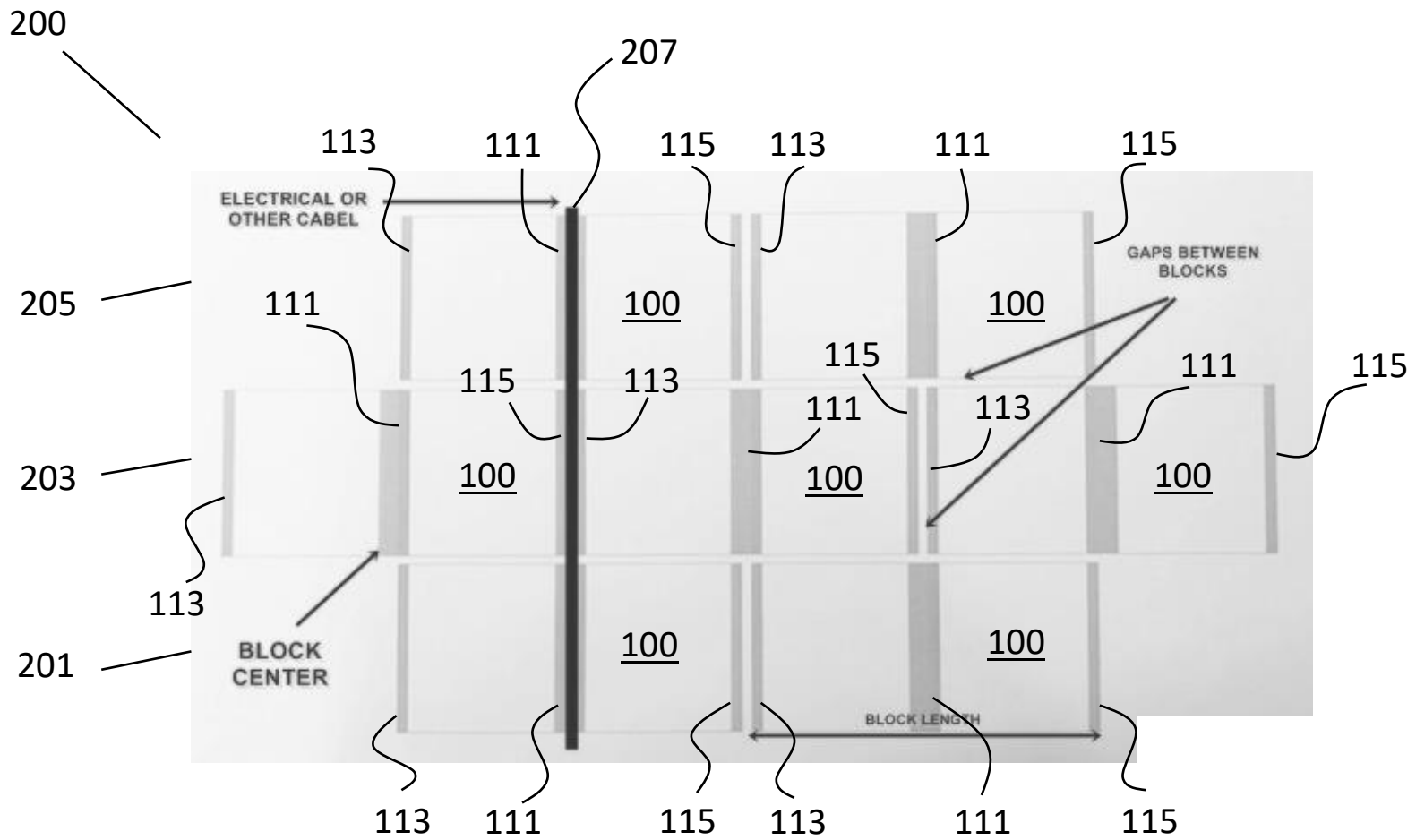


Fig. 2

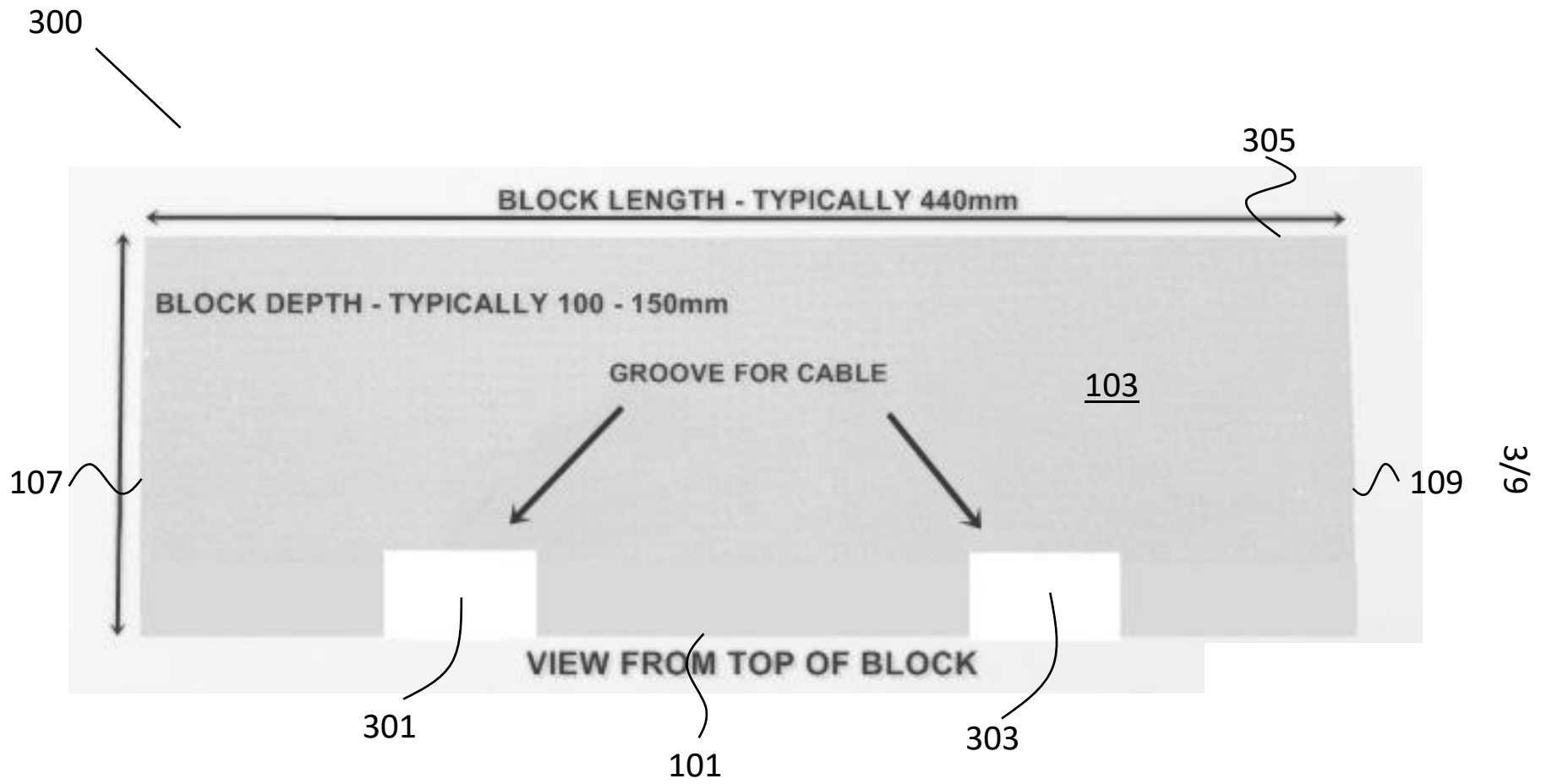


Fig. 3

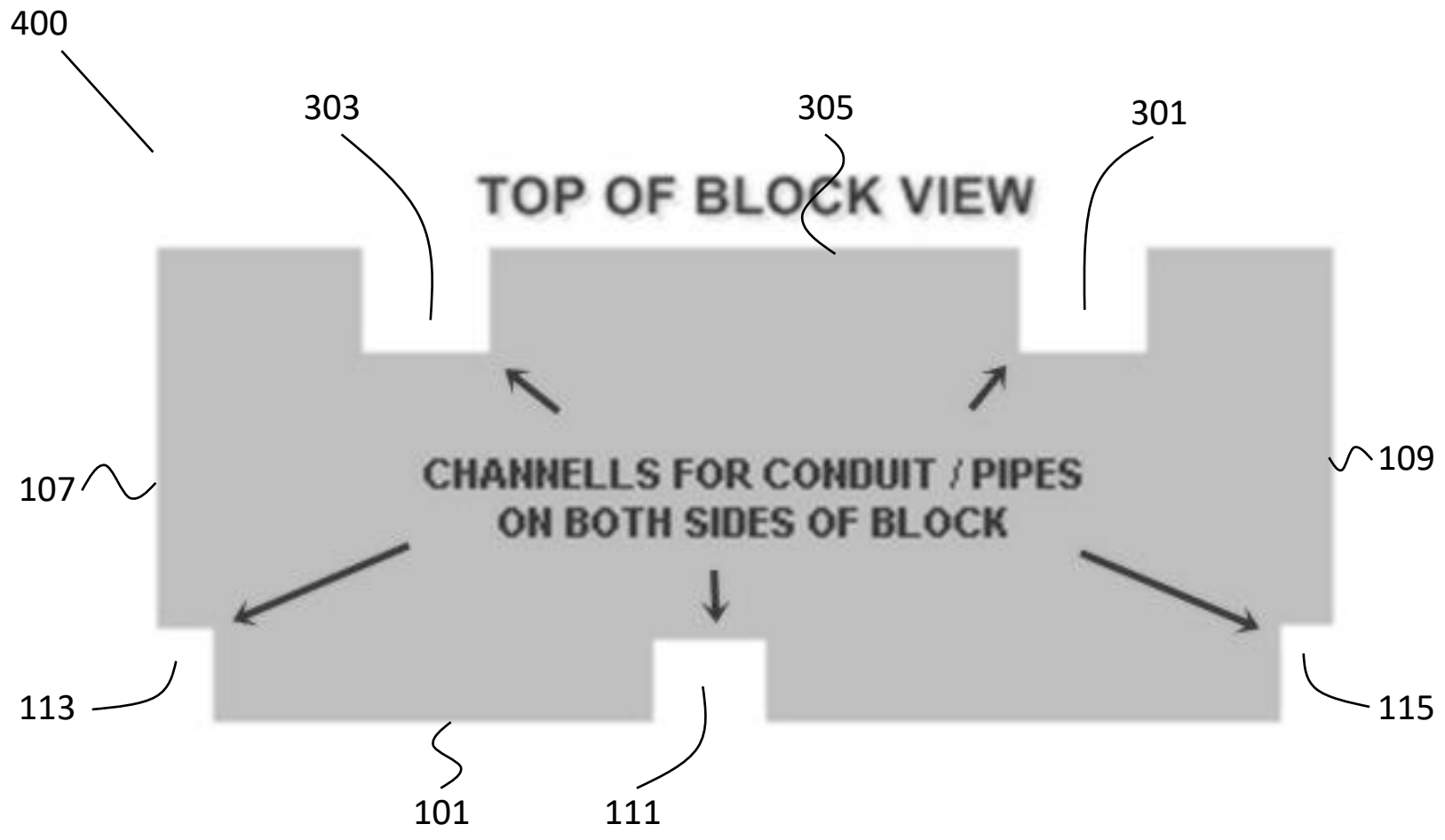
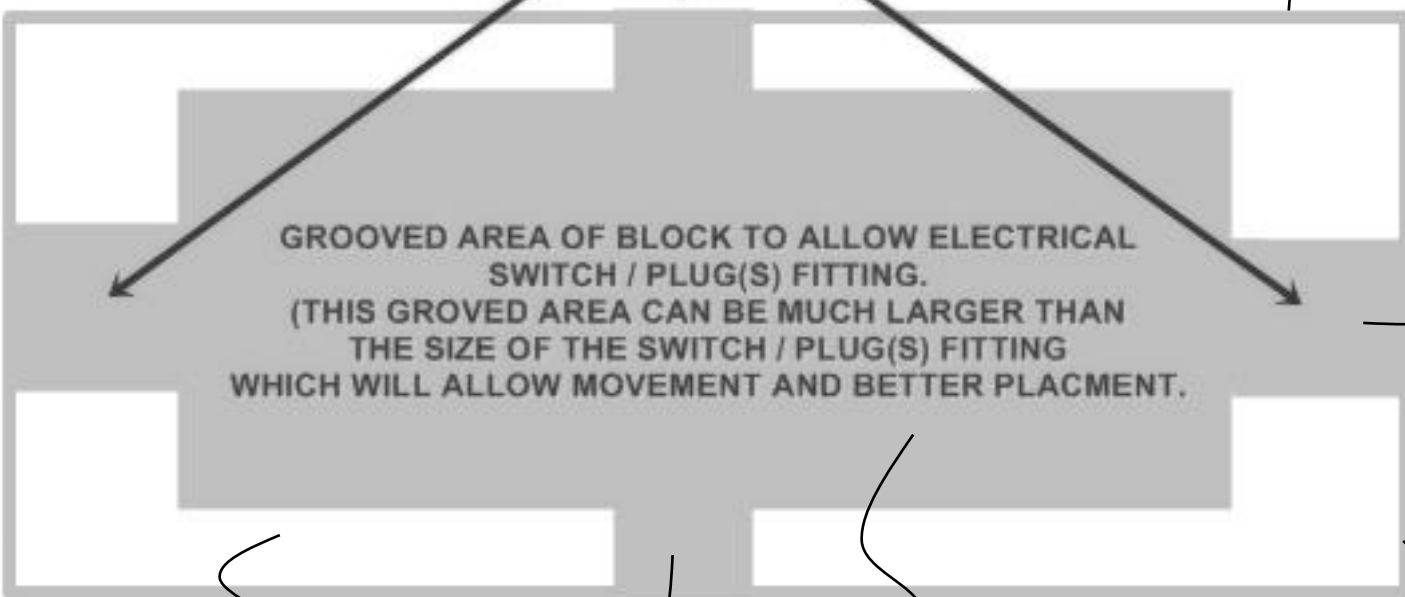


Fig. 4

500

GROOVE FOR ELECTRICAL WIRE OR CONDUIT

103



GROOVED AREA OF BLOCK TO ALLOW ELECTRICAL SWITCH / PLUG(S) FITTING.
 (THIS GROOVED AREA CAN BE MUCH LARGER THAN THE SIZE OF THE SWITCH / PLUG(S) FITTING WHICH WILL ALLOW MOVEMENT AND BETTER PLACEMENT.)

501

6/5

107

101

111

503

105

109

Fig. 5

600

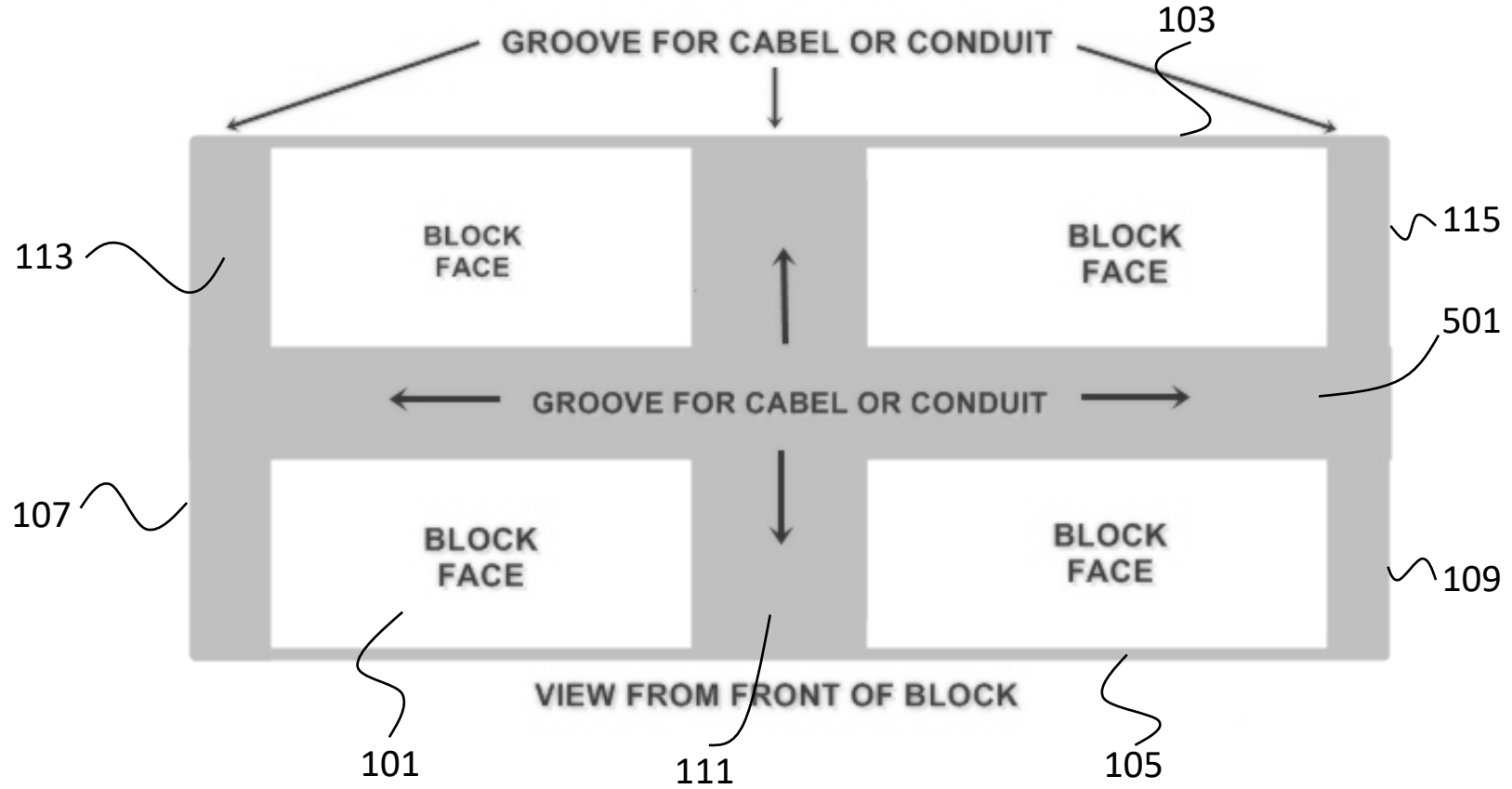


Fig. 6

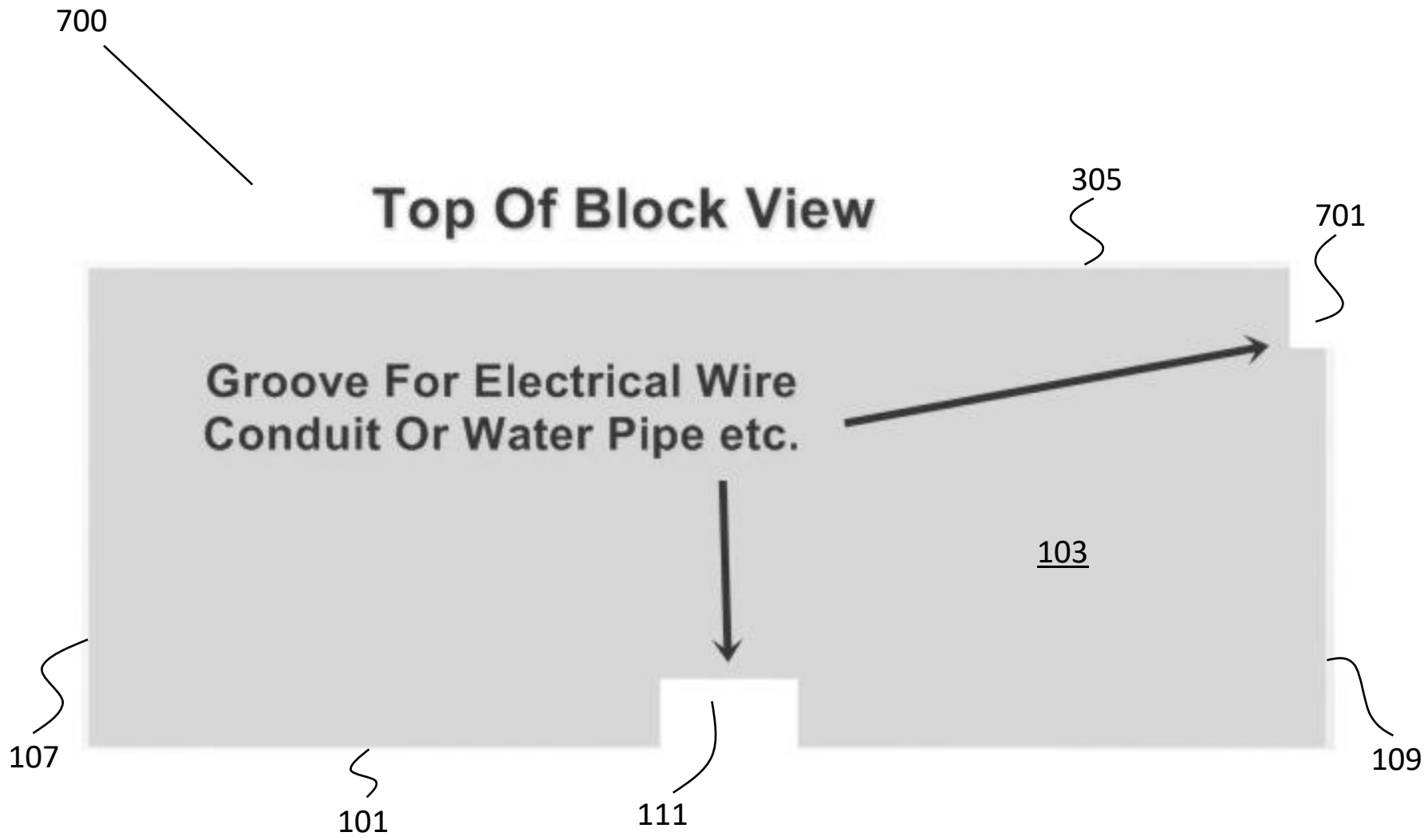


Fig. 7

800

Top Of Block View

103

**Pre Moulded or Cut Lines for
Easy Removal Of Chase or Groove**

6/8

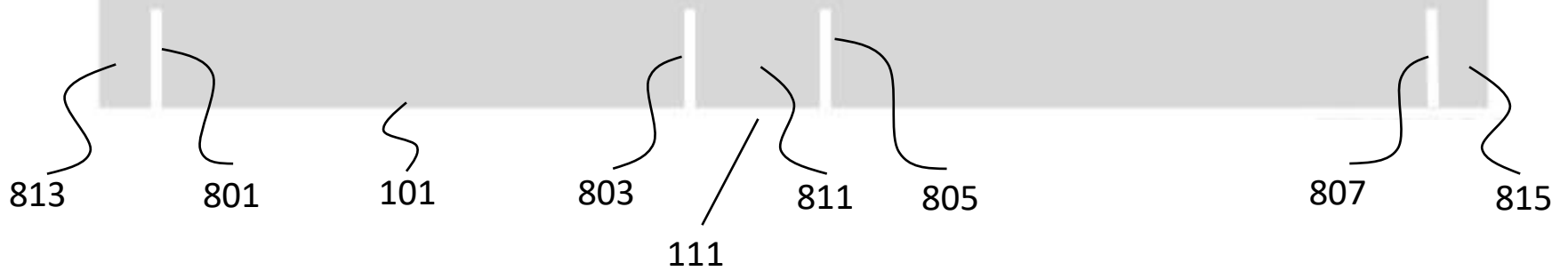


Fig. 8

900

305

Top Of Block View

103

901

903

Pre Cut or Moulded Lines To Ease
The Process Of Chasing The Walls

6/6

107

101

803

111

811

805

109

Fig. 9

